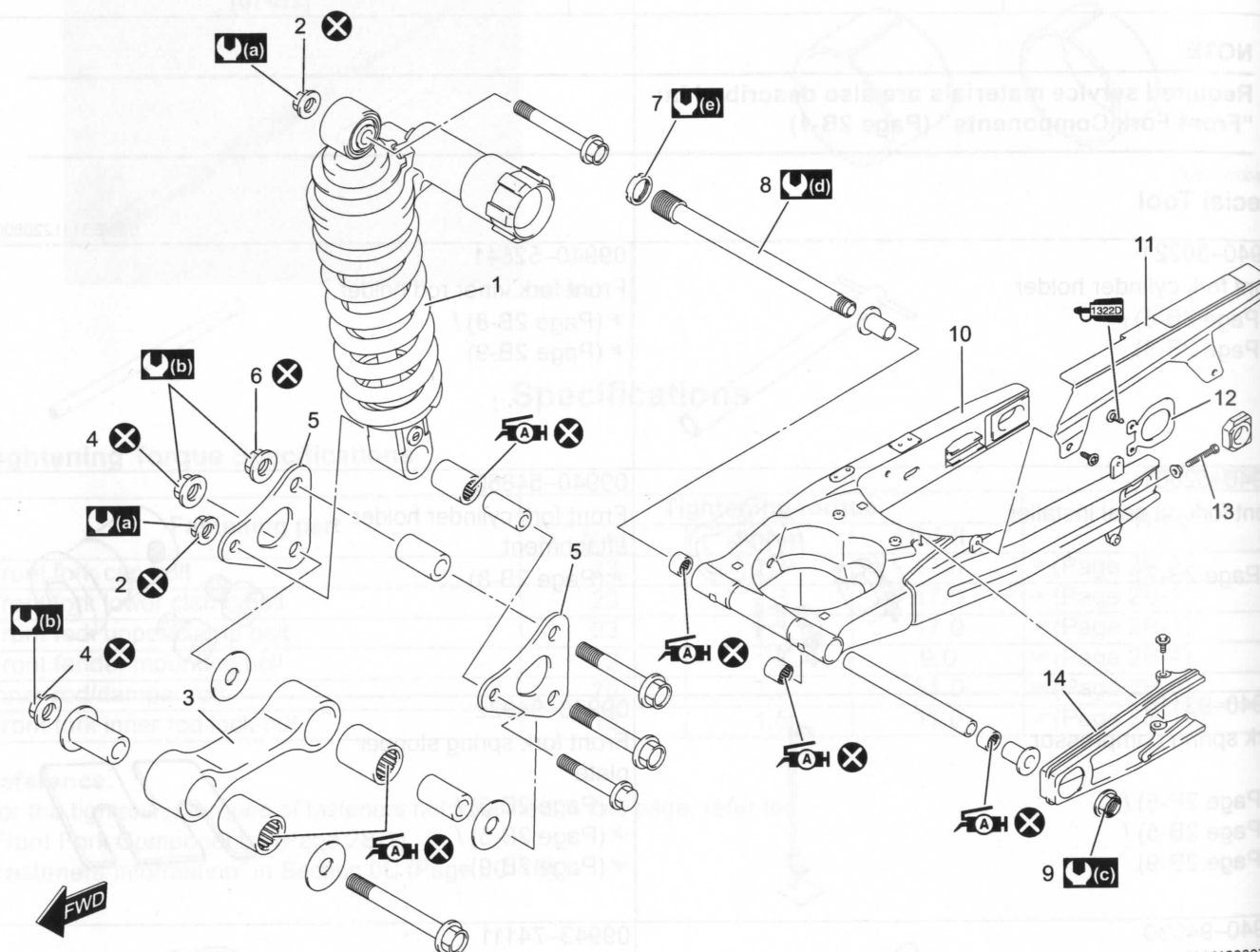


# Rear Suspension

## Repair Instructions

### Rear Suspension Components

BENE31J12306001



IE31J1230071-05

1. Rear shock absorber	9. Swingarm pivot nut	(c) : 100 N·m (10.0 kgf-m, 72.5 lbf-ft)
2. Rear shock absorber mounting nut	10. Swingarm	(d) : 15 N·m (1.5 kgf-m, 11.0 lbf-ft)
3. Cushion rod	11. Chain case	(e) : 90 N·m (9.0 kgf-m, 65.0 lbf-ft)
4. Cushion rod mounting nut	12. Plate	AH : Apply grease to the bearing.
5. Cushion lever	13. Chain adjuster	1322D : Apply thread lock to the thread part.
6. Cushion lever mounting nut	14. Chain buffer	⊗ : Do not reuse.
7. Swingarm pivot lock-nut	(a) : 50 N·m (5.0 kgf-m, 36.5 lbf-ft)	
8. Swingarm pivot shaft	(b) : 98 N·m (9.8 kgf-m, 71.0 lbf-ft)	